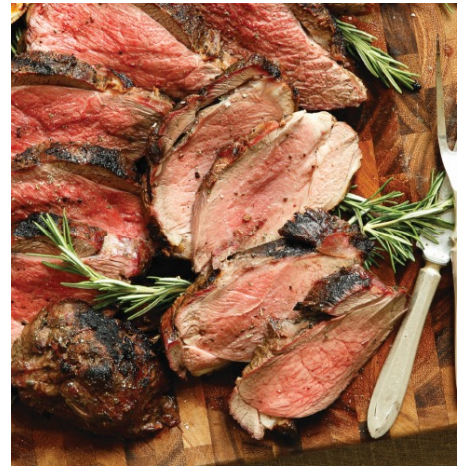




**We're committed to the farmer, the flock and the American lamb consumer**

**About Us**

- Founded in 1964 in Ellensburg, Washington
- 100% employee-owned since 1991
- We process 650,000 lambs per year.
- We produce over 1/3 of the domestic lamb sales in the U.S.
- International sales in more than 10 countries



**Locally, Sustainably Sourced**

- We partner with small family ranchers who share our respect for the flock and the land they graze. This dedication results in naturally healthy lamb.
- Our sustainable practices begin in the pasture and extend through every part of our business, including animal care, food quality and community support.

IMPORTED LAMB	AMERICAN LAMB
Smaller breeds, bred primarily for wool	Produced from larger breeds, bred for meat
Processed overseas by large meat conglomerates	Raised on family farms throughout USA and processed regionally
30+ days in transit, excessive food miles	10,000 miles fresher!
A commodity	An upscale, premium quality product

**SuperiorFarms.com**



Our all-natural lamb program is produced by Superior Farms naturally raised American lamb. Diners love the mild, mouthwatering flavor.

- **Tighter specs** that create more consistency, better portion control and an all-natural product
- **Farm To Fork** – We pull from local ranches in the rocky mountain region
- **Fabrication** is unparalleled for consistency and portion control



10055



10120



14156



10262



10270



10373



10584



10632

Item #	Product Description
10055	SF Lamb Shoulder Boneless 4-1 Cool Fresh
10120	SF Lamb Rack 4" CFO 4/dn 8-1 Logo Fresh
14156	SF Lamb Rack 4x2 C/Off NWC 2-1 Cool Fresh
10262	SF Lamb Loin 1" Split 6-1 Logo Fresh
10270	SF Lamb Loin Eyes Trim To Silver 8-2 Logo Fresh
10373	SF Lamb Leg Boneless Shank Off 4-1 Logo Fresh
10584	Lamb Ground 2-5# Logo Frozen
10632	Lamb Ground Sliders 2 oz RS 27-3 Cool Frozen

**Looking for additional cuts? Ask your sales rep!**

[MEATSBYLINZ.COM](http://MEATSBYLINZ.COM)

[SUPERIORFARMS.COM](http://SUPERIORFARMS.COM)