

NUESKE'S



WORLD'S FINEST QUALITY
APPLEWOOD
SMOKED MEATS

Smoked Bacon





Award-Winning Smoked Bacon

Our family's Northern Wisconsin smokehouse is renowned by lovers of good food for the flavor and quality of our fine smoked meats. Both chefs and home cooks, alike, enjoy the experience of working with our products because of the signature rich, sweet smoky flavor Nueske's imparts to so many dishes.

Applewood Smoked Bacon

The classic Applewood Smoked Bacon created using our time-tested recipes is one of the most popular offerings from our smokehouse. Nueske's Applewood Smoked Bacon earns awards and acclaim at the national level and is smoked a minimum of 24 hours over glowing embers of genuine applewood logs.

Smoked Pepper-Coated Bacon

Our Pepper-Coated Bacon is also Applewood Smoked in our traditional manner, but before the smoking process, we hand-rub each slab with fresh cracked Tellicherry peppercorns for an extra layer of zest and flavor.

Wild Cherrywood Smoked Uncured Bacon

The newest bacon in our lineup, this uncured bacon is slowly smoked for a minimum of 24 hours over sweet, robustly smoky cherrywood.

Applewood Smoked Canadian-Style Bacon

Our hand-trimmed loins for Canadian-style bacon are slowly smoked, extra lean, and make for superb eggs Benedict.

Nueske's Smoked Bacon is offered in:

- Whole, unsliced slabs
- Bacon in a variety of slice counts
- Foodservice packs
- Retail packs

Choose from our full line of Smoked Bacon shown in the chart at the right.

Nueske's Applewood Smoked Meats

203 North Genesee Street
Wittenberg, Wisconsin 54499

800-38-BACON (800-382-2266)

LOCAL | 715-253-4000
WEB | nueskemeats.com



Product Code	Product Description	Packaging & Specifications	Case Net Weight	Refrigerated/ Frozen Shelf Life	Dating Method
Nueske's Applewood Smoked Bacon					
2131	Slab Bacon, Whole Slab	1 - 12/14 lb. av. wt. VP	13 lbs. av. wt.	90 / 365 days	Production
2133	Slab Bacon, Whole Slab	3 - 12/14 lb. av. wt. VP	39 lbs. av. wt.	90 / 365 days	Production
2136	Slab Bacon, Half Slab	4 - 6/7 lb. av. wt. VP Frozen	26 lbs. av. wt.	90 / 365 days	Production
2138	Slab Bacon, Slab Chunk	8 - 1.5 lb. av. wt. VP Frozen	12 lbs. av. wt.	90 / 365 days	Production
2161	Sliced Triple-Thickness Butcher Cut Bacon, 6-8 Ct., 12 oz. <i>Retail Pack with UPC</i>	16 - 12 oz. exact wt. VP	12 lbs. exact wt.	90 / 365 days	Best by / Freeze By
2167	Sliced Bacon, 8-11 Ct.	2 - 5 lb. exact wt. CAP	10 lbs. exact wt.	90 / 365 days	Production
2168	Sliced Bacon, 4-6 Ct.	2 - 5 lb. exact wt. CAP	10 lbs. exact wt.	90 / 365 days	Production
2170	Sliced Bacon, 6-8 Ct.	6 - 5 lb. exact wt. CAP	30 lbs. exact wt.	90 / 365 days	Production
2171	Sliced Bacon, 10-12 Ct.	6 - 5 lb. exact wt. CAP	30 lbs. exact wt.	90 / 365 days	Production
2172	Sliced Bacon, 12-14 Ct.	6 - 5 lb. exact wt. CAP	30 lbs. exact wt.	90 / 365 days	Production
2174	Sliced Bacon, 16-20 Ct.	2 - 5 lb. exact wt. CAP	10 lbs. exact wt.	90 / 365 days	Production
2177	Sliced Bacon, 16-20 Ct.	6 - 5 lb. exact wt. CAP	30 lbs. exact wt.	90 / 365 days	Production
2178	Sliced Bacon, 16-20 Ct., 8 oz. <i>Retail Pack with UPC</i>	16 - 8 oz. exact wt. VP Frozen	8 lbs. exact wt.	90 / 365 days	Production
2180	Sliced Bacon, 16-20 Ct., 12 oz. <i>Retail Pack with UPC</i>	16 - 12 oz. exact wt. VP	12 lbs. exact wt.	90 / 365 days	Best by / Freeze By
2182	Sliced Bacon, 16-20 Ct., 1 lb. <i>Retail Pack with UPC</i>	12 - 1 lb. exact wt. VP	12 lbs. exact wt.	90 / 365 days	Best by / Freeze By
2188	Sliced Bacon, Restaurant Select, 16-20 Ct.	2 - 5 lb. exact wt. CAP	10 lbs. exact wt.	90 / 365 days	Production
2190	Sliced Bacon, Restaurant Select, 16-20 Ct.	6 - 5 lb. exact wt. CAP	30 lbs. exact wt.	90 / 365 days	Production
2194	Sliced Bacon, Restaurant Select, 20-24 Ct.	2 - 5 lb. exact wt. CAP	10 lbs. exact wt.	90 / 365 days	Production
2196	Sliced Bacon, 10-12 Ct.	2 - 5 lb. exact wt. CAP	10 lbs. exact wt.	90 / 365 days	Production
2197	Sliced Bacon, 12-14 Ct.	2 - 5 lb. exact wt. CAP	10 lbs. exact wt.	90 / 365 days	Production
2220	Sliced Bacon, 14-18 Ct.	2 - 5 lb. exact wt. CAP	10 lbs. exact wt.	90 / 365 days	Production
Nueske's Applewood Smoked Pepper-Coated Bacon					
2200	Pepper-Coated Sliced Bacon, 16-20 Ct.	2 - 5 lb. exact wt. CAP Frozen	10 lbs. exact wt.	90 / 365 days	Production
2201	Pepper-Coated Sliced Bacon, 16-20 Ct., 8 oz. <i>Retail Pack with UPC</i>	16 - 8 oz. exact wt. VP	8 lbs. exact wt.	90 / 365 days	Best by / Freeze By
2253	Pepper-Coated Slab Bacon, Whole Slab	1 - 12/14 lb. av. wt. VP Frozen	13 lbs. av. wt.	90 / 365 days	Production
Nueske's Wild Cherrywood Smoked Uncured Bacon					
2189	Uncured Slab Bacon, Whole Slab	1 - 12/14 lb. av. wt. VP Frozen	13 lbs. av. wt.	90 / 365 days	Production
2219	Uncured Sliced Bacon, 16-20 Ct., 12 oz. <i>Retail Pack with UPC</i>	16 - 12 oz. exact wt. VP	12 lbs. exact wt.	90 / 365 days	Best by / Freeze By
2223	Uncured Sliced Bacon, 16-20 Ct.	2 - 5 lb. exact wt. CAP	10 lbs. exact wt.	90 / 365 days	Production
Nueske's Applewood Smoked Canadian-Style Bacon					
2227	Canadian Bacon, Half Loins	2 - 2/3 lb. av. wt. VP	5 lbs. av. wt.	80 / 365 days	Production
2230	Canadian Bacon, Loins	8 - 14 oz. av. wt. VP	7 lbs. av. wt.	80 / 365 days	Production
2231	Sliced Canadian Bacon, 5 oz. <i>Retail Pack with UPC</i>	16 - 5 oz. exact wt. VP	5 lbs. exact wt.	80 / 365 days	Best by / Freeze By
2234	Sliced Canadian Bacon	2 - 5 lb. exact wt. CAP	10 lbs. exact wt.	80 / 365 days	Production

Key
CAP — Controlled Atmosphere Packaged
VP — Vacuum Packaged



NUESKE'S



WORLD'S FINEST QUALITY
APPLEWOOD
SMOKED MEATS

Retail Bacon





Award-Winning Smoked Bacon

Our family's Northern Wisconsin smokehouse is renowned by lovers of good food for the flavor and quality of our fine smoked meats. Both chefs and home cooks, alike, enjoy the experience of working with our products because of the signature rich, sweet smoky flavor Nueske's imparts to so many dishes.

Applewood Smoked Bacon

The classic Applewood Smoked Bacon created using our time-tested recipes is one of the most popular offerings from our smokehouse. Nueske's Applewood Smoked Bacon earns awards and acclaim at the national level and is smoked a minimum of 24 hours over glowing embers of genuine applewood logs.

Smoked Pepper-Coated Bacon

Our Pepper-Coated Bacon is also Applewood Smoked in our traditional manner, but before the smoking process, we hand-rub each slab with fresh cracked Tellicherry peppercorns for an extra layer of zest and flavor.

Wild Cherrywood Smoked Uncured Bacon

The newest bacon in our lineup, this uncured bacon is slowly smoked for a minimum of 24 hours over sweet, robustly smoky cherrywood.

Applewood Smoked Canadian-Style Bacon

Our hand-trimmed loins for Canadian-style bacon are slowly smoked, extra lean, and make for superb Eggs Benedict.

Nueske's Smoked Bacon offered in retail packages:

- Applewood Smoked Bacon
- Triple-Thick Butcher Cut Bacon
- Pepper-Coated Bacon
- Wild Cherrywood Smoked Bacon
- Canadian-Style Bacon

Nueske's Applewood Smoked Meats
203 North Genesee Street
Wittenberg, Wisconsin 54499

800-38-BACON (800-382-2266)

LOCAL | 715-253-4000
WEB | nueskemeats.com

	Product Description	Packaging & Specifications	Case Net Weight	Refrigerated/ Frozen Shelf Life	Dating Method
Nueske's Applewood Smoked Bacon					
2138	Slab Bacon, Slab Chunk	8 - 1.5 lb. av. wt. VP Frozen	12 lbs. av. wt.	90 days/365 days	Production
2161	Sliced Triple-Thick Butcher Cut Bacon, 6-8 Ct., 12 oz. Retail Pack with UPC	16 - 12 oz. exact wt. VP	12 lbs. exact wt.	90 days/365 days	Best By / Freeze By
2178	Sliced Bacon, 16-20 Ct., 8 oz. Retail Pack with UPC	16 - 8 oz. exact wt. VP Frozen	8 lbs. exact wt.	90 days/365 days	Production
2180	Sliced Bacon, 16-20 Ct., 12 oz. Retail Pack with UPC	16 - 12 oz. exact wt. VP	12 lbs. exact wt.	90 days/365 days	Best By / Freeze By
2182	Sliced Bacon, 16-20 Ct., 1 lb. Retail Pack with UPC	12 - 1 lb. exact wt. VP	12 lbs. exact wt.	90 days/365 days	Best By / Freeze By
Nueske's Applewood Smoked Pepper-Coated Bacon					
2201	Pepper-Coated Sliced Bacon, 16-20 Ct., 8 oz. Retail Pack with UPC	16 - 8 oz. exact wt. VP	8 lbs. exact wt.	90 days/365 days	Best By / Freeze By
Nueske's Wild Cherrywood Smoked Uncured Bacon					
2219	Uncured Sliced Bacon, 16-20 Ct., 12 oz. Retail Pack with UPC	16 - 12 oz. exact wt. VP\	12 lbs. exact wt.	90 days/365 days	Best By / Freeze By
Nueske's Applewood Smoked Canadian-Style Bacon					
2230	Canadian Bacon, Loin Chunk	8 - 14 oz. av. wt. VP	7 lbs. av. wt.	80 days/365 days	Production
2231	Sliced Canadian Bacon, 5 oz. Retail Pack with UPC	16 - 5 oz. exact wt. VP	5 lbs. exact wt.	80 days/365 days	Best By / Freeze By

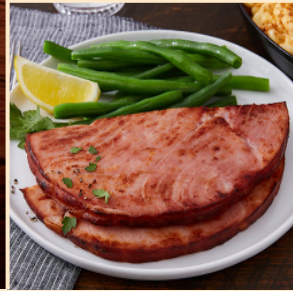
Key
VP — Vacuum Packaged

Choose from our full line of Nueske's Smoked Bacon for retail shown in the chart above.

Bulk Bacon is also available for your deli case.



NUESKE'S



WORLD'S FINEST QUALITY
APPLEWOOD
SMOKED MEATS

Smoked Ham & Chops





Smoked Ham & Chops

Our family's Northern Wisconsin smokehouse is renowned by lovers of good food for the flavor and quality of our fine smoked meats. Both chefs and home cooks, alike, enjoy cooking with our products because of the signature rich, sweet smoky flavor they impart to so many dishes.

Boneless & Bone-In Hams

Each one of our hams is hand-trimmed and smoked in our family's traditional manner, over glowing embers of genuine applewood logs. We have bone-in and boneless hams available, and both are incredibly flavorful, tender, and will help you create some of the best ham sandwiches, soups and quiches that you've ever served.

Spiral-Sliced, Honey-Glazed Hams

Especially popular for holiday seasons, gifting, and as a centerpiece on cold or hot buffets, we spiral-slice and then carefully honey-glaze our hams by hand. These rich, smoky, glazed hams are fully cooked and ready to serve or to gently warm to release the delicate sweetness from the honey glaze.

Pork & Chops

A favorite entrée in our corner of Wisconsin, our Applewood Smoked Pork Chops are ready to warm and serve. We offer a full Applewood Smoked Bone-In Pork Loin for custom-cutting chops right in your shop or restaurant.

Nueske's Applewood Smoked Ham and Pork are offered as:

- Bone-In Hams
- Boneless Hams
- Spiral-Sliced, Honey-Glazed Hams
- Ham Steak
- Smoked Pork Loins and Chops

Choose from our full line of Applewood Smoked Ham and Pork shown in the chart at the right.

Nueske's Applewood Smoked Meats
203 North Genesee Street
Wittenberg, Wisconsin 54499

800-38-BACON (800-382-2266)

LOCAL | 715-253-4000
WEB | nueskemeats.com

	Product Description	Packaging & Specifications	Case Net Weight	Refrigerated/ Frozen Shelf Life	Dating Method
Nueske's Applewood Smoked Boneless Hams					
2069	Boneless Pepper-Coated Ham, 10/12 lbs.	1 - 10/12 lb. av. wt. VP	11 lbs. av. wt.	80 days/365 days	Production
2076	Boneless Ham, 10/12 lbs.	1 - 10/12 lb. av. wt. VP	11 lbs. av. wt.	80 days/365 days	Production
2080	Boneless Ham, 6/9 lbs.	2 - 6/9 lb. av. wt. VP	15 lbs. av. wt.	80 days/365 days	Production
2082	Boneless Ham, 6/9 lbs.	4 - 6/9 lb. av. wt. VP	30 lbs. av. wt.	80 days/365 days	Production
2084	Boneless Ham, 3/5 lbs.	4 - 3/5 lb. av. wt. VP	16 lbs. av. wt.	80 days/365 days	Production
2087	Boneless Half Ham, 3/4 lbs.	4 - 3/4 lb. av. wt. VP	14 lbs. av. wt.	80 days/365 days	Production
Nueske's Applewood Smoked Bone-In Hams					
2106	Skinless Shankless Ham, 11/13 lbs.	1 - 11/13 lb. av. wt. VP	12 lbs. av. wt.	80 days/365 days	Production
2109	Skinless Shankless Half Ham, 6/9 lbs.	2 - 6/9 lb. av. wt. VP	15 lbs. av. wt.	80 days/365 days	Production
Nueske's Applewood Smoked Honey-Glazed Spiral-Sliced Hams					
2089	Boneless Honey-Glazed Spiral-Sliced Ham, 6/9 lbs.	1 - 6/9 lb. av. wt. VP FW Frozen	7.5 lbs. av. wt.	36 days/365 days	Production
2116	Honey-Glazed Spiral-Sliced Half Ham, 7/9 lbs.	2 - 7/9 lb. av. wt. VP FW Frozen	16 lbs. av. wt.	36 days/365 days	Production
2117	Honey-Glazed Spiral-Sliced Half Ham, 7/9 lbs.	1 - 7/9 lb. av. wt. VP FW Frozen	8 lbs. av. wt.	36 days/365 days	Production
2118	Honey-Glazed Spiral-Sliced Ham, 13/15 lbs.	1 - 13/15 lb. av. wt. VP FW Frozen	14 lbs. av. wt.	36 days/365 days	Production
2119	Honey-Glazed Spiral-Sliced Ham, 15/17 lbs.	1 - 15/17 lb. av. wt. VP FW Frozen	16 lbs. av. wt.	36 days/365 days	Production
Nueske's Applewood Smoked Ham Steaks					
2051	Boneless Center Cut Ham Steaks, 12 oz.	6 - 12 oz. av. wt. VP	4.5 lbs. av. wt.	80 days/365 days	Production
Nueske's Applewood Smoked Pork Chops					
2286	Pork Chops, 6 oz.	6 pkgs./cs., 2 - 6 oz. av. wt. chops/pkg. VP	5 lbs. av. wt.	80 days/365 days	Production
2297	Pork Chops, 3/4"	6 pkgs./cs., 2 - 3/4" chops/pkg. VP	6 lbs. av. wt.	80 days/365 days	Production
2303	Pork Chops, 10 oz.	8 pkgs./cs., 2 - 10 oz. av. wt. chops/pkg. VP	10 lbs. av. wt.	80 days/365 days	Production
Nueske's Applewood Smoked Pork Loin					
2230	Canadian Bacon, Loin Chunk	8 - 14 oz. av. wt. VP	7 lbs. av. wt.	80 days/365 days	Production
2227	Canadian Bacon, Half Loin	2 - 2/3 lb. av. wt. VP	5 lbs. av. wt.	80 days/365 days	Production
2290	Bone-In Pork Loin	1 - 11/13 lb. av. wt. VP	12 lbs. av. wt.	80 days/365 days	Production

Key

CAP — Controlled Atmosphere Packaged
FW — Foil-Wrapped
VP — Vacuum Packaged

NUESKE'S



WORLD'S FINEST QUALITY
APPLEWOOD
SMOKED MEATS

Smoked Sausage & Beef





Smoked Sausage & Beef

Our family's Northern Wisconsin smokehouse is renowned by lovers of good food for the flavor and quality of our fine smoked meats. Both chefs and home cooks, alike, enjoy cooking with our products because of the signature rich, sweet smoky flavor they impart to so many dishes.

Sausages & Paté

Nueske's offers a wide variety of Old World sausages that range from grilling favorites like natural casing bratwurst and wieners to summer sausages and snack sticks, such as traditional Landjaeger sausage. We create a smooth, spreadable liver paté blended with our own Applewood Smoked Bacon and spices for incredible depth and a slight peppery finish.

Beef

Our Applewood Smoked Beef is smoked for a minimum of 48 hours and is nothing short of amazing — simply slice paper-thin and enjoy. We also offer unsmoked corned beef hash made from tender beef and potatoes.

Nueske's Smoked Sausage and Beef offered:

- Specialty Sausage
- Applewood Smoked Beef
- Corned Beef Hash

Choose from our full line of Smoked Sausages and Beef shown in the chart at the right.

Nueske's Applewood Smoked Meats
203 North Genesee Street
Wittenberg, Wisconsin 54499

800-38-BACON (800-382-2266)

LOCAL | 715-253-4000
WEB | nueskemeats.com

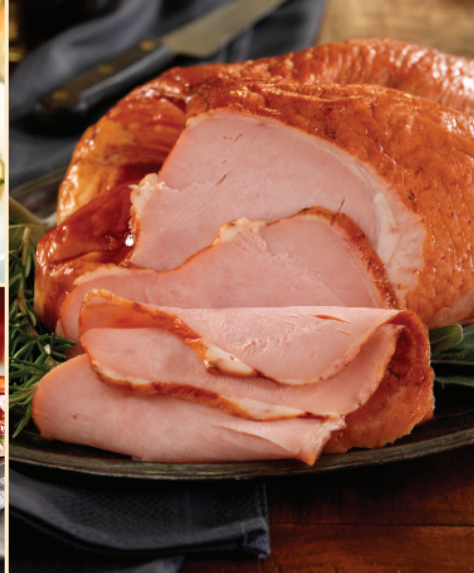


	Product Description	Packaging & Specifications	Case Net Weight	Refrigerated/ Frozen Shelf Life	Dating Method
Nueske's Applewood Smoked Sausage					
3003	All-Beef Summer Sausage, 10 oz. Retail Pack with UPC	16 - 10 oz. exact wt. VP	10 lbs. exact wt.	270 days/ indefinite	Best By/Freeze By
3013	Garlic Summer Sausage, 10 oz. Retail Pack with UPC	16 - 10 oz. exact wt. VP	10 lbs. exact wt.	270 days/ indefinite	Best By/Freeze By
3018	Beef & Pork Summer Sausage, 10 oz. Retail Pack with UPC	16 - 10 oz. exact wt. VP	10 lbs. exact wt.	270 days/ indefinite	Best By/Freeze By
3093	Natural Casing Bratwurst, 5:1, 1 lb. Retail Pack with UPC	12 - 1 lb. exact wt. VP	12 lbs. exact wt.	90 days/365 days	Best By/Freeze By
3094	Natural Casing Bratwurst, 5:1, 5.5 lbs.	2 - 5.5 lb. exact wt. CAP Frozen	11 lb. exact wt.	90 days/365 days	Production
3121	Natural Casing Cheddar Bratwurst, 5:1 Retail Pack with UPC	12 - 1 lb. exact wt. VP Frozen	12 lbs. exact wt.	90 days/365 days	Production
3123	Natural Casing Cheddar Bratwurst, 5:1, 1 lb., 5.5 lbs. Retail Pack with UPC	2 - 5.5 lb. exact wt. VP Frozen	11 lbs. exact wt.	90 days/365 days	Production
3119	Natural Casing Bacon Cheddar Bratwurst, 5:1, 1 lb. Retail Pack with UPC	12 - 1 lb. av. wt. VP Frozen	12 lbs. exact wt.	90 days/365 days	Production
3124	Natural Casing Bacon Cheddar Bratwurst, 5:1, 5.5 lbs. Retail Pack with UPC	2 - 5.5 lb. exact wt. CAP Frozen	11 lbs. exact wt.	90 days/365 days	Production
3127	Natural Casing Jalapeño Bacon Cheddar Bratwurst, 5:1, 1 lb., Retail Pack with UPC	12 - 1 lb. exact wt. VP Frozen	12 lb. exact wt.	90 days/365 days	Production
3128	Natural Casing Jalapeño Bacon Cheddar Bratwurst, 5:1, 5.5 lbs.	2 - 5.5 lb. exact wt. CAP Frozen	11 lb. exact wt.	90 days/365 days	Production
3188	Liver Paté, Deli Chub, 2.5 lbs.	1 - 2.5 lb. av. wt. VP	2.5 lbs. av. wt.	80 days/365 days	Production
3194	Liver Paté, 10 oz. Retail Pack with UPC	10 - 10 oz. exact wt. VP	6.25 lbs. exact wt.	60 days/365 days	Best By/Freeze By
3233	Natural Casing Beef Sausage Sticks, 9-11 per lb., 1 lb.	4 - 1 lb. exact wt. CAP	4 lbs. exact wt.	365 days/ indefinite	Best By/Freeze By
3237	Natural Casing Beef Sausage Sticks, 6-8 per pkg., 6 oz. Retail Pack with UPC	12 - 6 oz. exact wt. VP	4.5 lbs. exact wt.	365 days/ indefinite	Best By/Freeze By
3255	Natural Casing Landjaeger Sausage Sticks, 18-20 per lb., 1 lb.	4 - 1 lb. exact wt. CAP	4 lbs. exact wt.	365 days/ indefinite	Best By/Freeze By
3259	Natural Casing Landjaeger Sausage Sticks, 6-8 per pkg., 6 oz. Retail Pack with UPC	12 - 6 oz. exact wt. VP	4.5 lbs. exact wt.	365 days/ indefinite	Best By/Freeze By
3267	Natural Casing Summer Sausage Sticks, 9-11 per lb., 1 lb.	4 - 1 lb. exact wt. CAP	4 lbs. exact wt.	365 days/ indefinite	Best By/Freeze By
3271	Natural Casing Summer Sausage Sticks, 6-8 per pkg., 6 oz. Retail Pack with UPC	12 - 6 oz. exact wt. VP	4.5 lbs. exact wt.	365 days/ indefinite	Best By/Freeze By
2995	Natural Casing Big Dogs Wieners, 5:1, 1 lb., 5.5 lbs. Retail Pack with UPC	2 - 5.5 lb. exact wt. CAP Frozen	11 lb. exact wt.	90 days/365 days	Production
2994	Natural Casing Big Dogs Wieners, 5:1, 1 lb. Retail Pack with UPC	12 - 1 lb. exact wt. VP	12 lbs. exact wt.	90 days/365 days	Production
3288	Natural Casing Wieners, 9:1, 1 lb. Retail Pack with UPC	12 - 1 lb. exact wt. VP	12 lbs. exact wt.	90 days/365 days	Best By/Freeze By
3302	Honey Ham Sticks, 16:1, 3 lbs.	2 - 3 lb. exact wt. VP	6 lbs. exact wt.	395 days/ indefinite	Best By/Freeze By
3303	Honey Ham Sticks, 16:1, 8 oz. Retail Pack with UPC	20 - 8 oz. exact wt. VP	10 lbs. exact wt.	395 days/ indefinite	Best By/Freeze By
Nueske's Fresh Unsmoked Sausage					
3217	Natural Casing Fresh Ring Liver Sausage, Whole Ring, 7 oz.	6 - 14 oz. av. wt. VP Frozen	6 lbs. av. wt.	65 days/365 days	Production
Nueske's Beef					
2252	Applewood Smoked Whole Beef, 3 lb.	2 - 3 lb. av. wt. VP	6 lbs. av. wt.	90 days/365 days	Production
2257	Applewood Smoked Sliced Beef, 4 oz.	12 - 4 oz. exact wt. CAP	3 lbs. exact wt.	90 days/365 days	Best By/Freeze By
2600	Corned Beef Hash, 1 lb. Retail Pack with UPC	12 - 1 lb. exact wt. VP Frozen	12 lbs. exact wt.	60 days/365 days	Production

Key

CAP — Controlled Atmosphere Packaged
VP — Vacuum Packaged

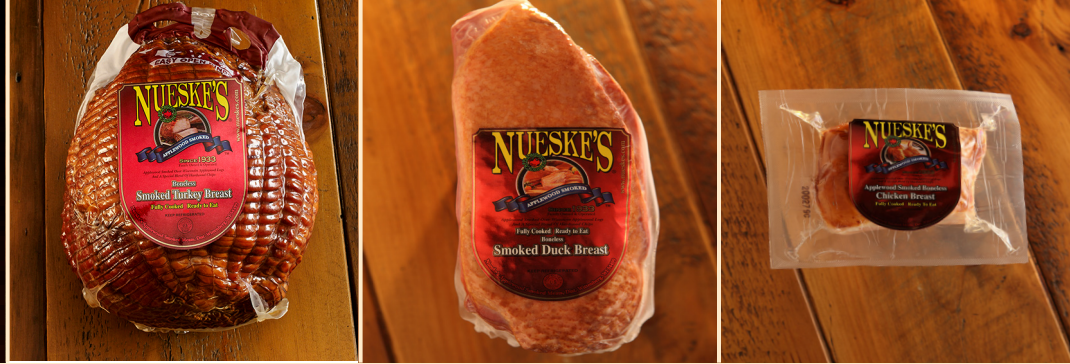
NUESKE'S



WORLD'S FINEST QUALITY
— — — — —
APPLEWOOD
SMOKED MEATS
— — — — —

Smoked Poultry





Award-Winning Smoked Poultry

Our family's Northern Wisconsin smokehouse is renowned by lovers of good food for the flavor and quality of our fine smoked meats. Both chefs and home cooks, alike, enjoy the experience of working with our products because of the signature rich, sweet smoky flavor Nueske's imparts to so many dishes.

Smoked Boneless Breasts

Succulent and tender, our Applewood Smoked Boneless Breasts are fully cooked and ready to serve as an entrée or as a savory, smoky ingredient in salads, soups and pasta dishes.

Smoked Whole Birds

Choosing an Applewood Smoked Whole Bird gives you some additional flexibility and creativity in the kitchen, including making superior smoky stocks from the bones, cold salads with big flavor, and as an extraordinary pizza topping.

Nueske's Applewood Smoked Whole Birds offered:

- Whole Duck
- Whole Chicken

Nueske's Applewood Smoked Boneless Breasts offered:

- Boneless Duck Breast
- Boneless Chicken Breast
- Boneless Turkey Breast

Choose from our full line of Applewood Smoked Poultry shown in the chart at the right.

	Product Description	Packaging & Specifications	Case Net Weight	Refrigerated/ Frozen Shelf Life	Dating Method
Nueske's Applewood Smoked Turkey					
2047	Boneless Carving Turkey Breast, Flat	2 - 4/6 lb. av. wt. VP Frozen	10 lbs. av. wt.	80 days/365 days	Production
2043	Boneless Turkey Breast, Round	1 - 6/9 lb. av. wt. VP	7.5 lbs. av. wt.	80 days/365 days	Production
Nueske's Applewood Smoked Chicken					
2003	Boneless Chicken Breast, Flat, Bulk	8 pkgs./cs., 6 - 8 oz. av. wt. pcs./pkg. VP	24 lbs. av. wt.	80 days/365 days	Best By / Freeze By
2010	Boneless Chicken Breast, Flat	18 - 8 oz. av. wt. VP Frozen	9 lbs. av. wt.	80 days/365 days	Production
2008	Whole Chicken	3 - 3 lb. av. wt. VP Frozen	9 lbs. av. wt.	80 days/365 days	Production
Nueske's Applewood Smoked Duck					
2032	Boneless Duck Breast, Flat	6 - 11 oz. av. wt. VP	4.5 lbs. av. wt.	80 days/365 days	Production

Key

CAP — Controlled Atmosphere Packaged
 FW — Foil-Wrapped
 VP — Vacuum Packaged

Nueske's Applewood Smoked Meats
 203 North Genesee Street
 Wittenberg, Wisconsin 54499

800-38-BACON

LOCAL | 715-253-4000
 WEB | nueskemeats.com

