

*phenomenal, we do that!®*

POWERED BY PREMIER PROTEINS, LLC

# Premier American Grass-Fed Beef®

WE WORK WITH SMALL FARMS ALL THROUGHOUT THE MIDWEST, MANY OF WHICH HAVE BEEN OPERATING FOR GENERATIONS. WE CONNECT THEM TO THE WORLD BEEF MARKET SO THEY CAN CONTINUE DOING WHAT THEY DO BEST, FOR GENERATIONS TO COME.

*what's everyone talking about?*

## THE HEALTH BENEFITS

• LOWER IN FAT AND CALORIES •

• RICHER IN OMEGA-3 FATTY ACIDS •

• A MORE FAVORABLE OMEGA-6 TO OMEGA-3 RATIO •

• EXCELLENT SOURCE OF CONJUGATED LINOLEIC ACID (CLA) •

• MORE LUTEIN AND BETA-CAROTENE (THINK CARROTS) •

## ANGUS GRASS-FED BEEF!?

• AT LEAST 50 PERCENT •

• BLACK, RED, OR A CROSS •

• YOUNG ALL-NATURAL CATTLE •

• MONITORED BY AN ANIMAL NUTRITIONIST •

• NOT THE TYPICAL POOR QUALITY GRASS-FED CATTLE •

*other attributes we ♥*

BEEF, REGARDLESS OF FEEDING REGIMEN, IS REGARDED AS AN IMPORTANT SOURCE OF: ESSENTIAL AMINO ACIDS, VITAMIN A, VITAMIN B6, VITAMIN E, VITAMIN B12, VITAMIN D, IRON, ZINC, AND SELENIUM.

NEVER EVER GIVEN ANTIBIOTICS OR HORMONES • 100% DOMESTICALLY BRED AND RAISED

ALL NATURAL • SOURCE AND AGE VERIFIED • VEGETARIAN-FED

3RD PARTY AUDITED • HUMANELY RAISED ON SMALL FAMILY FARMS

NO ARTIFICIAL INGREDIENTS • NO GROWTH PROMOTANTS • NO GRAIN-BASED FEEDS

MINIMALLY PROCESSED • HALAL CERTIFIED

SOLELY DISTRIBUTED BY PREMIER PROTEINS, LLC.

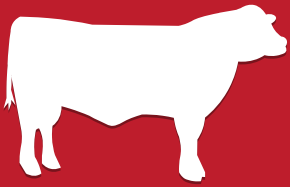
📍: I S. PLATTE CLAY WAY  
#820  
KEARNEY, MO 64060

🌐: WWW.REDTOPFARMS.COM  
✉: HELLO@REDTOPFARMS.COM

☎: 816.628.0078



*quality  
integrity  
service*



*phenomenal, we do that!®*

POWERED BY PREMIER PROTEINS, LLC

# Premier American Kobe Beef®

WE WORK WITH SMALL FARMS ALL THROUGHOUT THE MIDWEST, MANY OF WHICH HAVE BEEN OPERATING FOR GENERATIONS. WE CONNECT THEM TO THE WORLD BEEF MARKET SO THEY CAN CONTINUE DOING WHAT THEY DO BEST, FOR GENERATIONS TO COME.

*does it compare to imported wagyu?*

## PREMIER AMERICAN KOBE BEEF\*

• RICH BEEFY TASTE PROFILE •

• SUPERIOR TENDERNESS •

• TRADITIONAL JAPANESE CORN-FED DIET •

• HUMANELY RAISED ON SMALL FAMILY FARMS •

• FINE MARBLING DUE TO YOUNGER AGE OF ANIMAL •

## IMPORTED WAGYU

• WEAK BEEF TASTE •

• TOUGHER BITE AND CHEW •

• WHEAT/GRASS BASED DIET •

• "METALLIC" TASTING TANG •

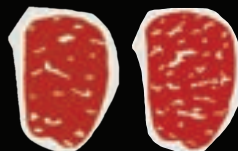
• COURSE MARBLING DUE TO OLDER AGE OF ANIMAL •

ALL NATURAL • SOURCE AND AGE VERIFIED • HALAL CERTIFIED • 3<sup>RD</sup> PARTY AUDITED  
NO GROWTH PROMOTANTS • VEGETARIAN-FED  
NEVER EVER GIVEN ANTIBIOTICS OR HORMONES • 100% DOMESTICALLY BRED AND RAISED

*4 grades for improved quality & consistency*

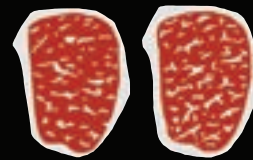


*premier*



BMS 3

BMS 4

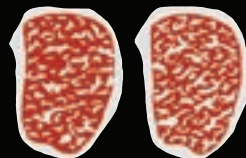


BMS 5

BMS 6

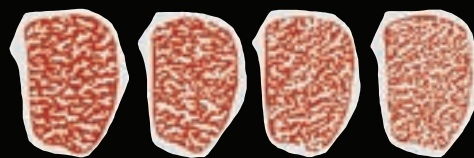
*four star*

*five star*



BMS 7

BMS 8



BMS 9

BMS 10

BMS 11

BMS 12

*prestige*

BMS IMAGES COURTESY: JAPAN MEAT GRADING ASSOCIATION

SOLELY DISTRIBUTED BY PREMIER PROTEINS, LLC.

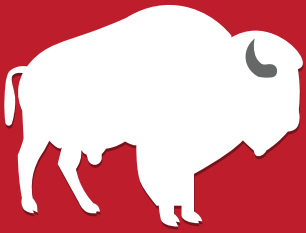
📍: I S. PLATTE CLAY WAY  
#820  
KEARNEY, MO 64060

🌐: WWW.REDTOPFARMS.COM  
✉: HELLO@REDTOPFARMS.COM

☎: 816.628.0078



*quality  
integrity  
service*



*phenomenal, we do that!®*

POWERED BY PREMIER PROTEINS, LLC

# Premier American Bison®

WE WORK WITH SMALL FARMS ALL THROUGHOUT THE MIDWEST, MANY OF WHICH HAVE BEEN OPERATING FOR GENERATIONS. WE CONNECT THEM TO THE WORLD MEAT MARKET SO THEY CAN CONTINUE DOING WHAT THEY DO BEST, FOR GENERATIONS TO COME.

*why natural harvest?*

## PREMIER AMERICAN BISON®'S NATURAL HARVEST

•ADDS NO WATER TO THE CARCASS•

•FLAVOR ISN'T TAINTED•

•COLOR DOESN'T LIGHTEN•

•CLEAN LABELING POSSIBLE•

## THE COMPETITION

•ADDS WATER TO CARCASS•

•CAN TAINT THE FLAVOR•

•COLOR LIGHTENS•

•ADDED PHOSPHATES LIMIT CLEAN LABELING•

NATURALLY IT'S A YES FOR US

*other attributes  
we ♥*



NEVER EVER GIVEN ANTIBIOTICS OR HORMONES • VEGETARIAN-FED

MINIMALLY PROCESSED • NO ARTIFICIAL INGREDIENTS

ALL NATURAL • TRACE AND SOURCE VERIFIED

VERIFIED BY AFFIDAVIT • HUMANELY RAISED ON SMALL INDEPENDENT FAMILY RANCHES

NOSE TO TAIL AVAILABILITY, NOT JUST GROUND BISON

SOLELY DISTRIBUTED BY PREMIER PROTEINS, LLC.

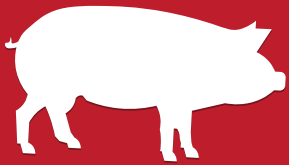
📍: I S. PLATTE CLAY WAY  
#820  
KEARNEY, MO 64060

🌐: WWW.REDTOPFARMS.COM  
✉: HELLO@REDTOPFARMS.COM

☎: 816.628.0078



*quality  
integrity  
service*



*phenomenal, we do that!®*

POWERED BY PREMIER PROTEINS, LLC

# Premier American Berkshire Pork®

WE WORK WITH SMALL FARMS ALL THROUGHOUT THE MIDWEST, MANY OF WHICH HAVE BEEN OPERATING FOR GENERATIONS. WE CONNECT THEM TO THE WORLD PORK MARKET SO THEY CAN CONTINUE DOING WHAT THEY DO BEST, FOR GENERATIONS TO COME.

*how does it compare?*

## PREMIER AMERICAN BERKSHIRE PORK®

## THE COMPETITION

•TENDER, BUTTERY FLAVOR & CHEW•

•TOUGHER CHEW DUE TO DIET & GENETICS•

•"CLEAN & CREAMY" FLAVOR PROFILE•

•"ACIDIC OR SOUR" FLAVOR PROFILE•

•HIGHER pH LEVELS•

•LOWER pH LEVELS•

•NEVER PUMPED OR INJECTED•

•CAN BE PUMPED OR INJECTED•

•SUPERIOR ANIMAL-TO-ANIMAL CONSISTENCY•

•INCONSISTENCY FROM ANIMAL-TO-ANIMAL•

*other attributes  
we ♥*

NEVER EVER GIVEN ANTIBIOTICS OR HORMONES • 100% DOMESTICALLY BRED AND RAISED

NO GROWTH PROMOTANTS (INCLUDING RACTOPAMINE) • VEGETARIAN-FED

ALL NATURAL • SOURCE AND AGE VERIFIED

3RD PARTY AUDITED • HUMANELY RAISED ON SMALL FAMILY FARMS

ACCESS TO OUTDOORS • EXCEPTIONAL INTERMUSCULAR MARBLING AND DEEP RED COLOR

CROSSED WITH DUROC FOR MUSCLE GROWTH AND CONSISTENCY

SOLELY DISTRIBUTED BY PREMIER PROTEINS, LLC.

📍: I S. PLATTE CLAY WAY  
#820  
KEARNEY, MO 64060

🌐: WWW.REDTOPFARMS.COM

✉: HELLO@REDTOPFARMS.COM

☎: 816.628.0078



*quality  
integrity  
service*